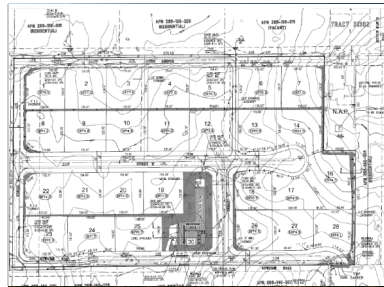


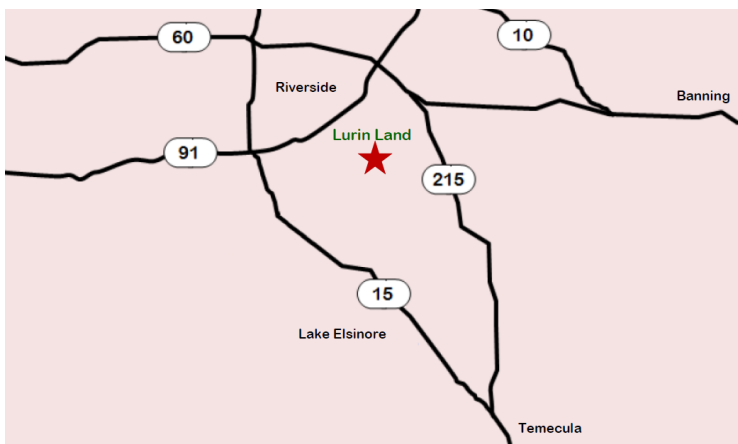
ASSET PROFILE



Lurin Land RIVERSIDE, CA

Lurin Land is composed of 8 parcels, totaling 50.78 acres. There are three approved tentative tract maps totaling 84 single family residential lots ranging from minimum 13,000 square feet to larger than one acre. The properties are generally located south of Lurin Avenue and west of Barton Street in the City of Riverside in Riverside County, California.

diversifiedpacific.com



ACQUIRED:
July 2009

ASSET ALLOCATION:
Long Term Investment